

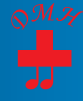
**BLOCK YOUR DATES !!!**

## First of its kind

Dual Theme International Conference  
& Hands on Workshop on

# Interventional EUS & Third Space Endoscopy

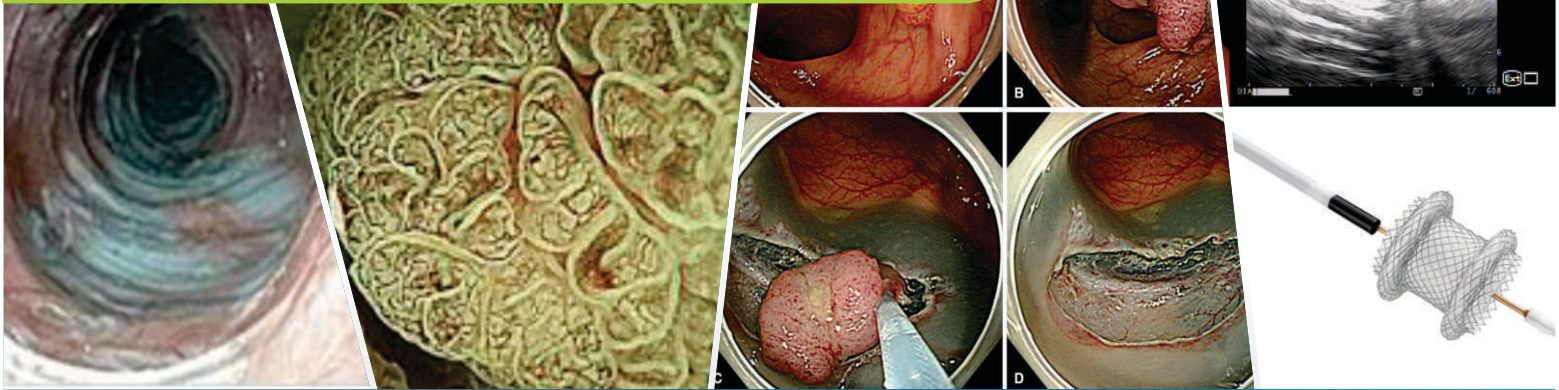
Organised by



Under the aegis of



**26th, 27th & 28th April 2019**  
**Venue : Hotel Conrad, Pune**



## Confirmed International Faculty



Prof. Kenshi Yao,  
Japan



Prof. Noriya Uedo,  
Japan



Prof. Rajvinder Singh,  
Australia



Dr. Seiichiro Abe,  
Japan



Prof. Kazuo Hara,  
Japan



Prof. Manuel Perez  
Miranda  
Spain



Prof. Thawee  
Ratanachu-ek,  
Thailand

## Program Highlights

- Two & Half days of intensive Hands on training in NBI, ESD, Third Space Endoscopy & Interventional EUS
- Live demonstrations of Interventional EUS procedures
- Live demonstrations of NBI, EMR, ESD & Third Space Endoscopy procedures
- Video lectures, symposia, debates & panel discussions by International & National Masters
- Hands on training on porcine models for ESD, POEM, pseudocyst & EUS guided biliary drainage, endoscopic suturing, GERDx – on all three days
- Live demonstration of new procedures – EFTR, GERDx, POEM-F, PREM, ESG, ORISE™ system, endoscopic suturing

<b>5th International Dual Theme Workshop on Interventional EUS &amp; NBI / ESD / Third Space Endoscopy</b>		
<b>April 26, 27, 28th, 2019</b>		
<b>Conference Venue</b>	<b>Hotel Conrad, Pune</b>	
<b>Live Demonstrations from</b>	<b>Shivanand Desai Center for Digestive Disorders, Deenanath Mangeshkar Hospital &amp; Research Center, Pune</b>	
<b>Day 1 - Friday, 26th April 2019</b>		
<b>0830-0850</b>	<b>Registration</b>	
<b>0850-0900</b>	<b>Welcome, Introduction to the Course</b>	
<b>0900-0915</b>	<b>Lecture 1</b>	<b>Microanatomy of the stomach and large intestine with its endoscopic implications</b>
<b>0915-0930</b>	<b>Lecture 2</b>	<b>Esophageal SCC - best practice</b>
<b>0930-0945</b>	<b>Lecture 3</b>	<b>Evaluation and Treatment of Barrett's - What should I be doing in 2019?</b>
<b>0945-1000</b>	<b>Lecture 4</b>	<b>Quality examination of the stomach by WL &amp; IEE - How to detect &amp; characterize lesions</b>
<b>1000-1015</b>	<b>Lecture 5</b>	<b>Differentiating Colonic Polyps - Differentiating the good from the bad and the ugly</b>
<b>1015-1030</b>	<b>Lecture 6</b>	<b>Basics of Interventional EUS; what one should know?</b>
<b>1030-1045</b>	<b>Lecture 7</b>	<b>Polypectomy - Best practice</b>
<b>1045-1245</b>	<b>Live Demonstrations</b>	
<b>1245-1330</b>	<b>Lunch</b>	
<b>1330-1345</b>	<b>Lecture 8</b>	<b>Gastric ESD - Step by step</b>
<b>1345-1400</b>	<b>Lecture 9</b>	<b>Techniques of Endoscopic Resection for Colorectal Flat Adenomas</b>
<b>1400-1415</b>	<b>Lecture 10</b>	<b>Algorithm for EUS-BD</b>
<b>1415-1430</b>	<b>Lecture 11</b>	<b>How I do it - EUS-PD</b>
<b>1430-1630</b>	<b>Live Demonstrations</b>	
<b>1630-1700</b>	<b>Video Panel Discussion</b>	<b>Tips &amp; Tricks to learn &amp; master ESD</b>
<b>1730-1930</b>	<b>Hands on sessions</b>	
<b>2000 onwards</b>	<b>Faculty dinner, welcome dinner</b>	

<b>Day 2 - Saturday, 27th April 2019</b>		
<b>0730-0830</b>	<b>Breakfast session 1</b>	<b>Making ESD safe &amp; efficient - New &amp; novel tips, tricks &amp; tools</b>
	<b>Breakfast session 2</b>	<b>Making POEM safe - Tricks &amp; Tips!</b>
	<b>Breakfast session 3</b>	<b>EUS guided PFC drainage - how to make it safe?</b>
	<b>Breakfast session 4</b>	<b>FNA vs. FNB - Tissue is always the Issue!</b>
<b>0850-0900</b>	<b>Review - Day 1</b>	
<b>0900-0915</b>	<b>Lecture 12</b>	<b>EUS guided vascular therapy</b>
<b>0915-0930</b>	<b>Lecture 13</b>	<b>EUS-GJ &amp; EUS-GBD</b>
<b>0930-0945</b>	<b>Lecture 14</b>	<b>EUS - BD - How to make it safe?</b>
<b>0945-1000</b>	<b>Lecture 15</b>	<b>Interventional EUS - Ready for Prime Time?</b>
<b>1000-1015</b>	<b>Lecture 16</b>	<b>GERD after POEM - Acknowledge, Accept, Avoid ?</b>
<b>1015-1030</b>	<b>Lecture 17</b>	<b>Endoscopic antireflux therapy - ARMS, GERDx</b>
<b>1030-1045</b>	<b>Lecture 18</b>	<b>Endoscopic Sleeve Gastroplasty - Principles, Indications &amp; Results</b>
<b>1045-1245</b>	<b>Live Demonstrations</b>	
<b>1245-1330</b>	<b>Lunch</b>	
<b>1330-1340</b>	<b>Debate</b>	<b>EMR vs. ESD for Colorectal Lesions - Pro EMR</b>
<b>1340-1350</b>	<b>Debate</b>	<b>EMR vs. ESD for Colorectal Lesions - Pro ESD</b>
<b>1350-1430</b>	<b>Panel discussion</b>	<b>Third Space Endoscopy - Panel</b>
<b>1430-1630</b>	<b>Live Demonstrations</b>	
<b>1630-1645</b>	<b>Lecture 19</b>	<b>NBI Imaging in IBD - Terminology, Surveillance, Resection</b>
<b>1645-1700</b>	<b>Lecture 20</b>	<b>Training &amp; credentialing for Third Space Endoscopy procedures - do we have any guidelines?</b>
<b>1700-1715</b>	<b>Lecture 21</b>	<b>Technology Update</b>
<b>1730-1930</b>	<b>Hands on sessions</b>	
<b>2000 onwards</b>	<b>Gala Banquet</b>	

<b>Day 3 - Sunday, 28th April 2019</b>		
<b>0730-0830</b>	<b>Breakfast session 5</b>	<b>EUS-BD - How I do it?</b>
	<b>Breakfast session 6</b>	<b>Other Myotomy Techniques - G-POEM, Z-POEM, PREM, STER</b>
	<b>Breakfast session 7</b>	<b>Are all LAMS the same? Choosing the right stent for the right indication</b>
	<b>Breakfast session 8</b>	<b>Endoscopic Suturing &amp; GERDx</b>
<b>0850-0900</b>	<b>Review - Day 2</b>	
<b>0900-0920</b>	<b>Share &amp; Learn (Third Space Endoscopy)</b>	<b>Share &amp; learn - selected interesting videos by participants moderated by experts</b>
<b>0920-0940</b>	<b>Share &amp; Learn (Interventional EUS)</b>	<b>Share &amp; learn - selected interesting videos by participants moderated by experts</b>
<b>0940-1000</b>	<b>Share &amp; Learn (ESD)</b>	<b>Share &amp; learn - selected interesting videos by participants moderated by experts</b>
<b>1000-1015</b>	<b>Lecture 22</b>	<b>Metabolic Endoscopy - current status</b>
<b>1015-1030</b>	<b>Lecture 23</b>	<b>EUS-RFA - Current Status</b>
<b>1030-1230</b>	<b>Live demonstrations</b>	
<b>1230-1245</b>	<b>Wrap up Day 2, close &amp; disperse for lunch</b>	
<b>1300-1530</b>	<b>Hands on sessions</b>	